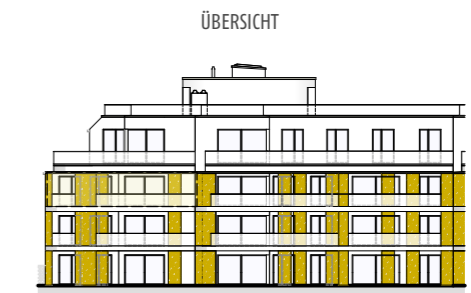
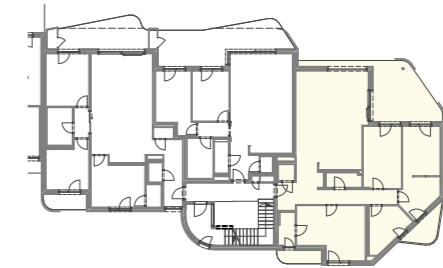
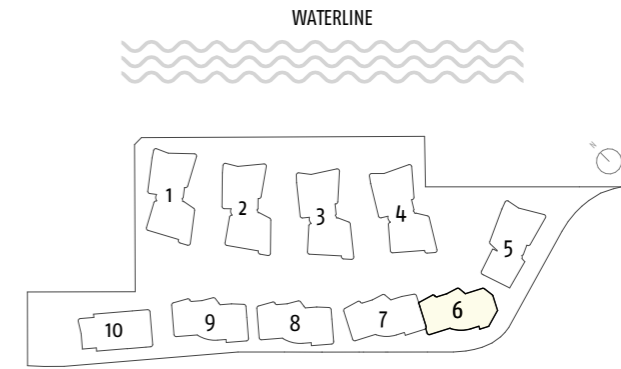
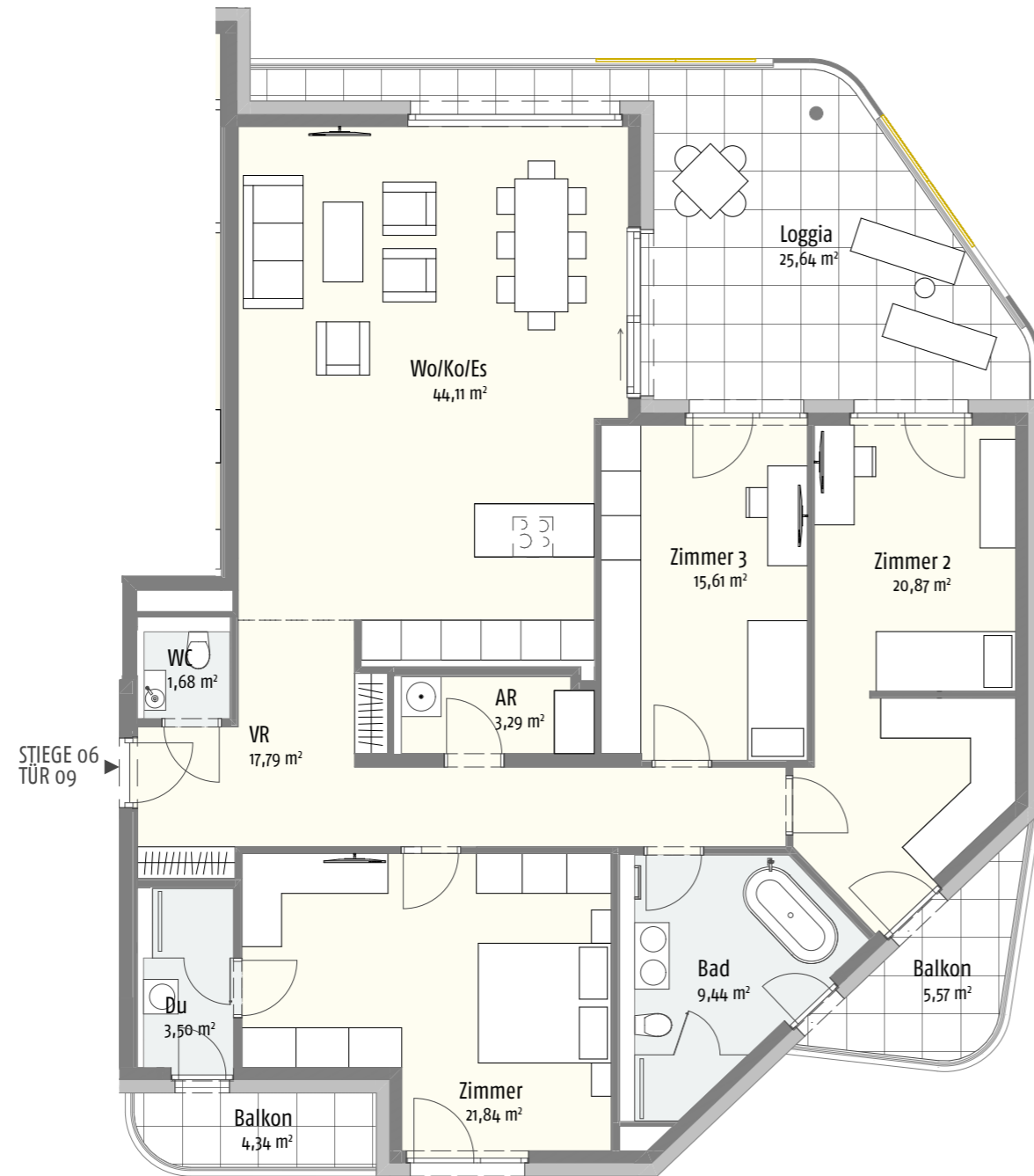


## KUCHELAUER HAFENSTRASSE 98 STIEGE 06 | TÜR 09 | 2. OBERGESCHOSS



ÜBERSICHT

FASSADENANSICHT

Wohnfläche:	138,13 m <sup>2</sup>
Loggia + AR:	25,64 m <sup>2</sup>
NNF:	163,77 m <sup>2</sup>
Keller:	14,88 m <sup>2</sup>
Balkon	9,91 m <sup>2</sup>