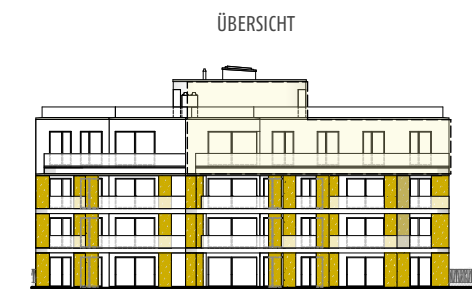
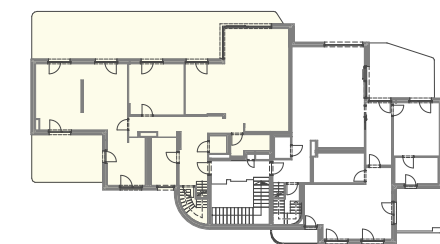
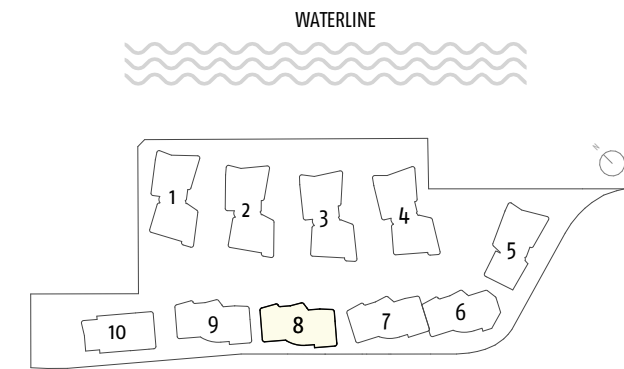
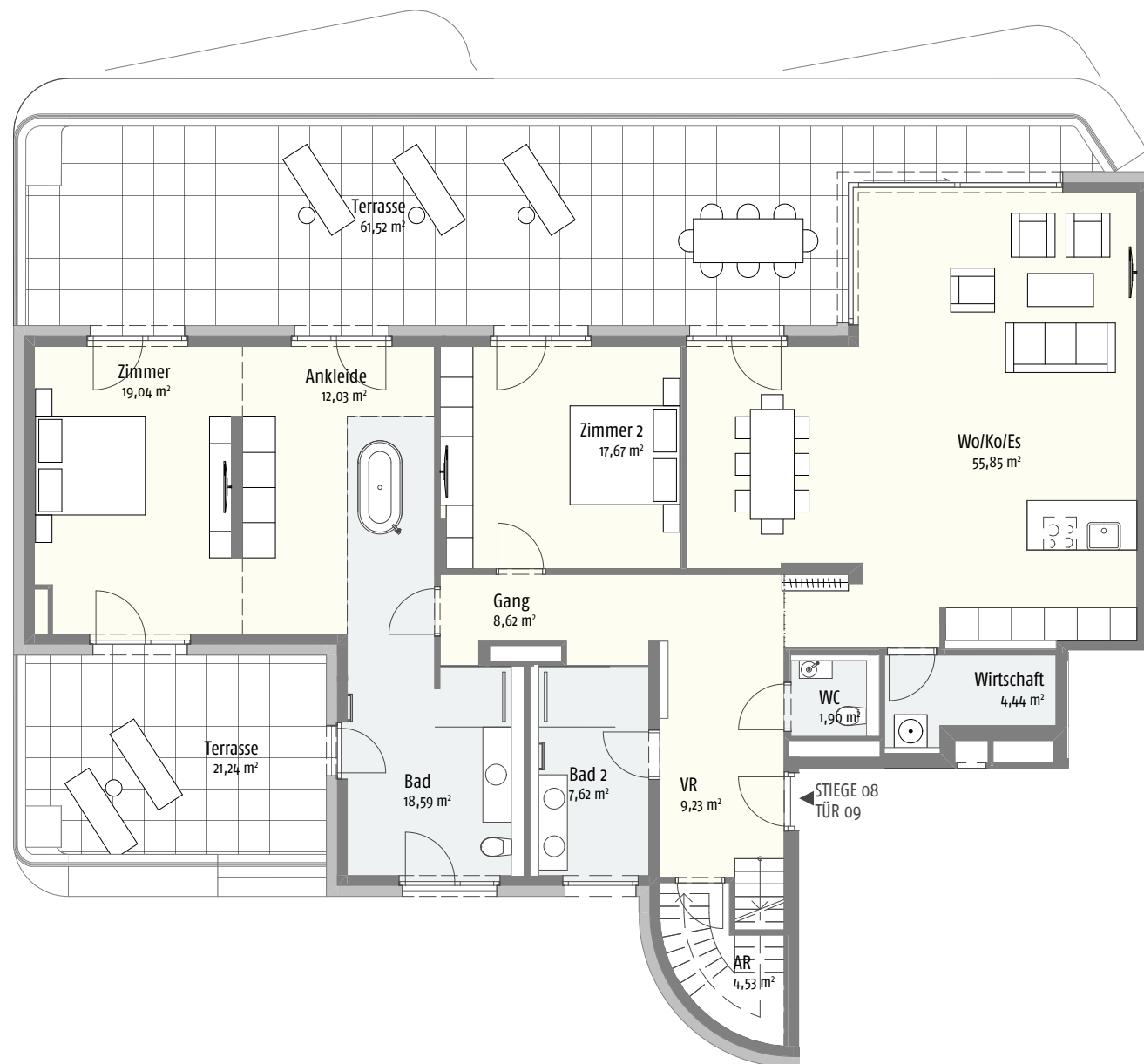
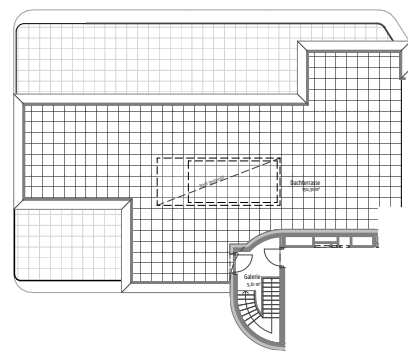


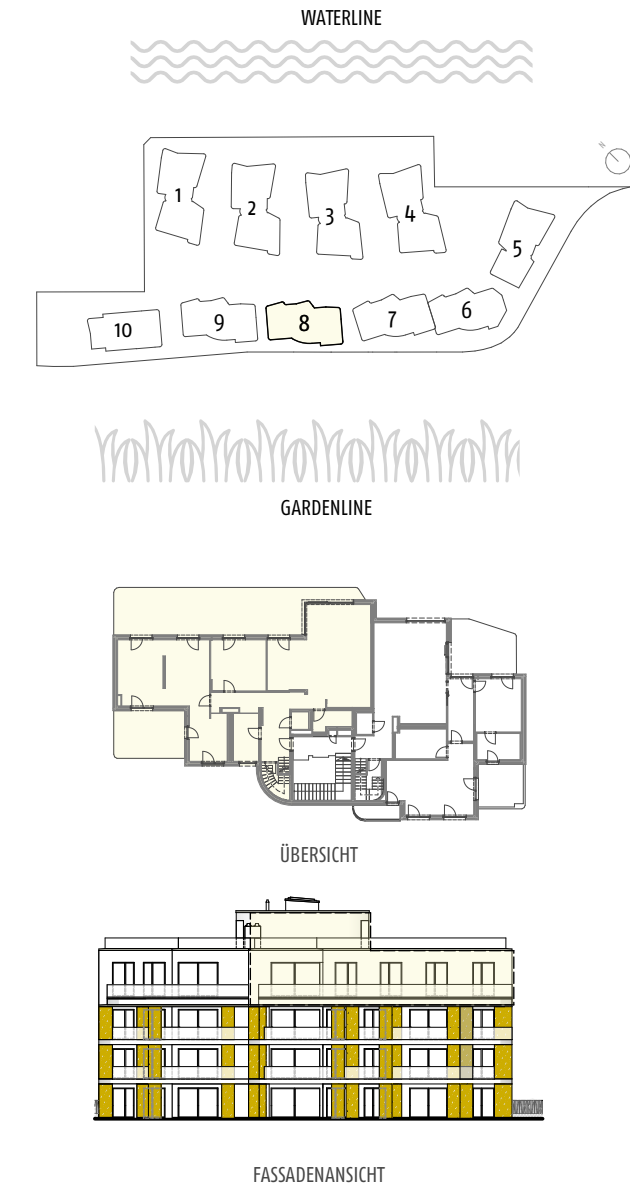
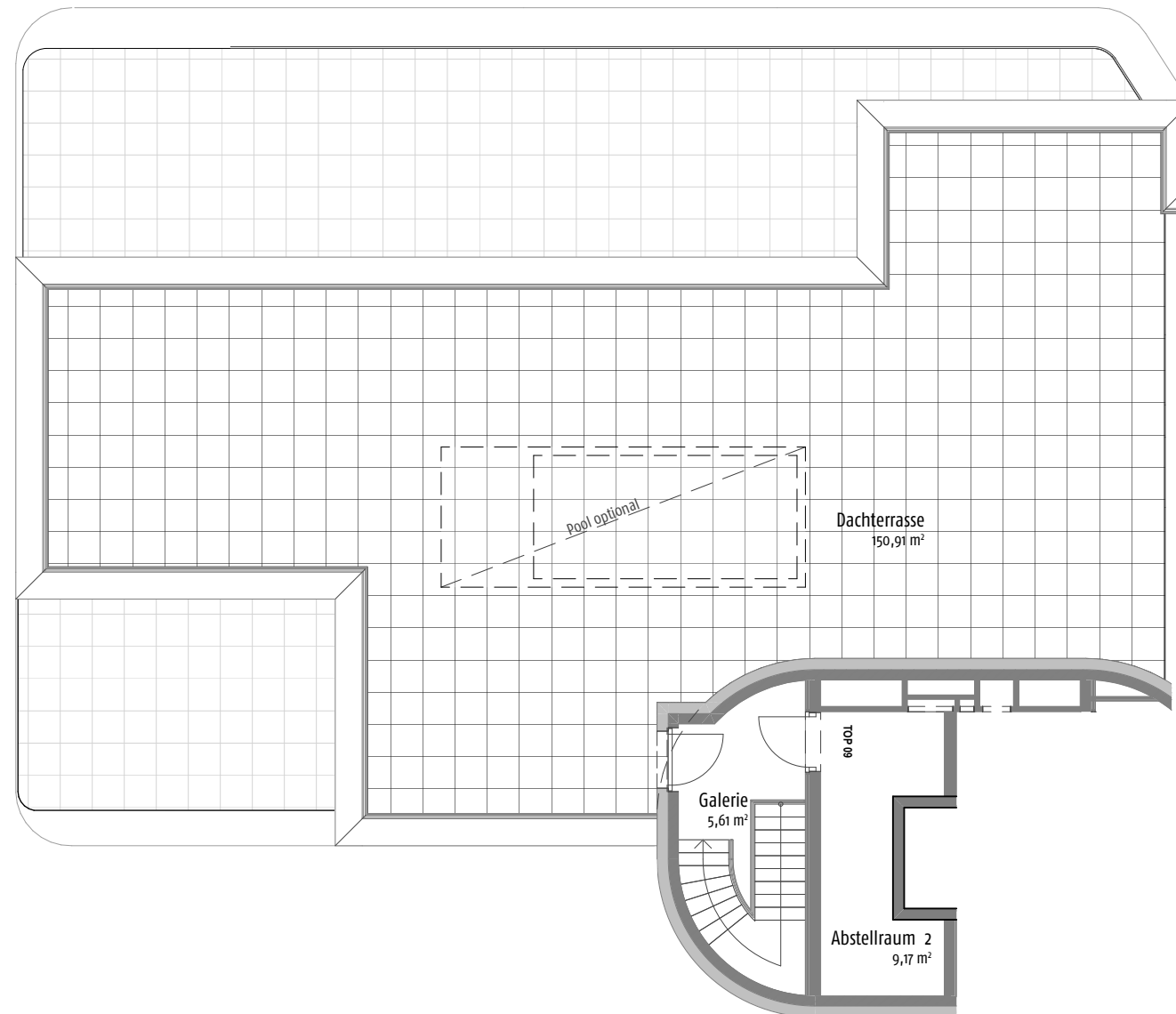
KUCHELAUER HAFENSTRASSE 98 STIEGE 08 | TÜR 09 | DACHGESCHOSS



FASSADENANSICHT

Wohnfläche:	174,30 m ²
NNF:	174,30 m ²
Terrasse:	82,76 m ²
Keller:	20,62 m ²
Dachterasse	150,91 m ²

KUCHELAUER HAFENSTRASSE 98 HAUS 08 | TOP 09 | DACHTERRASSE



Wohnfläche:	174,30 m ²
NNF:	174,30 m ²
Terrasse:	82,76 m ²
Keller:	20,62 m ²
Dachterrasse	150,91 m ²