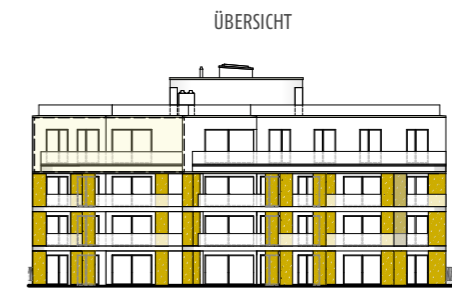
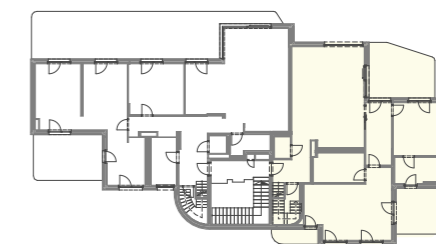
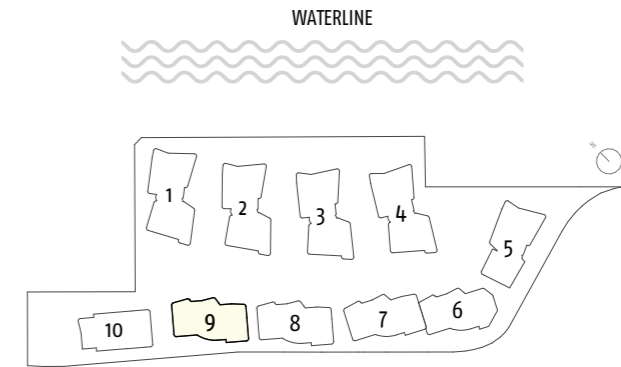
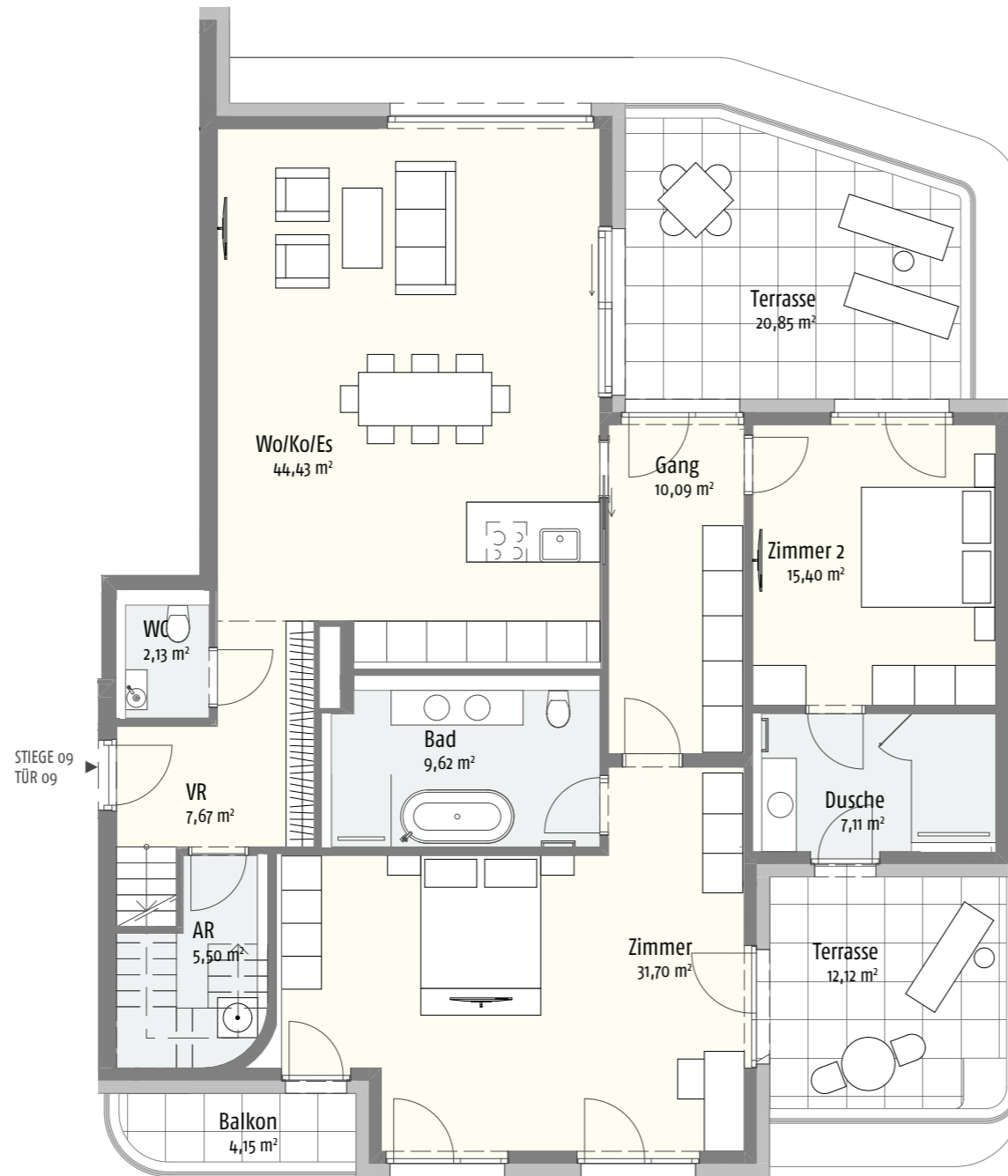
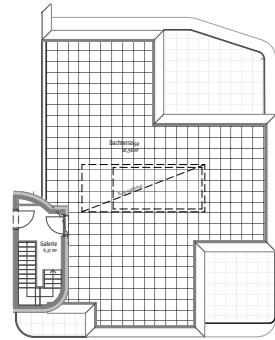


## KUCHELAUER HAFENSTRASSE 98 STIEGE 09 | TÜR 09 | DACHGESCHOSS

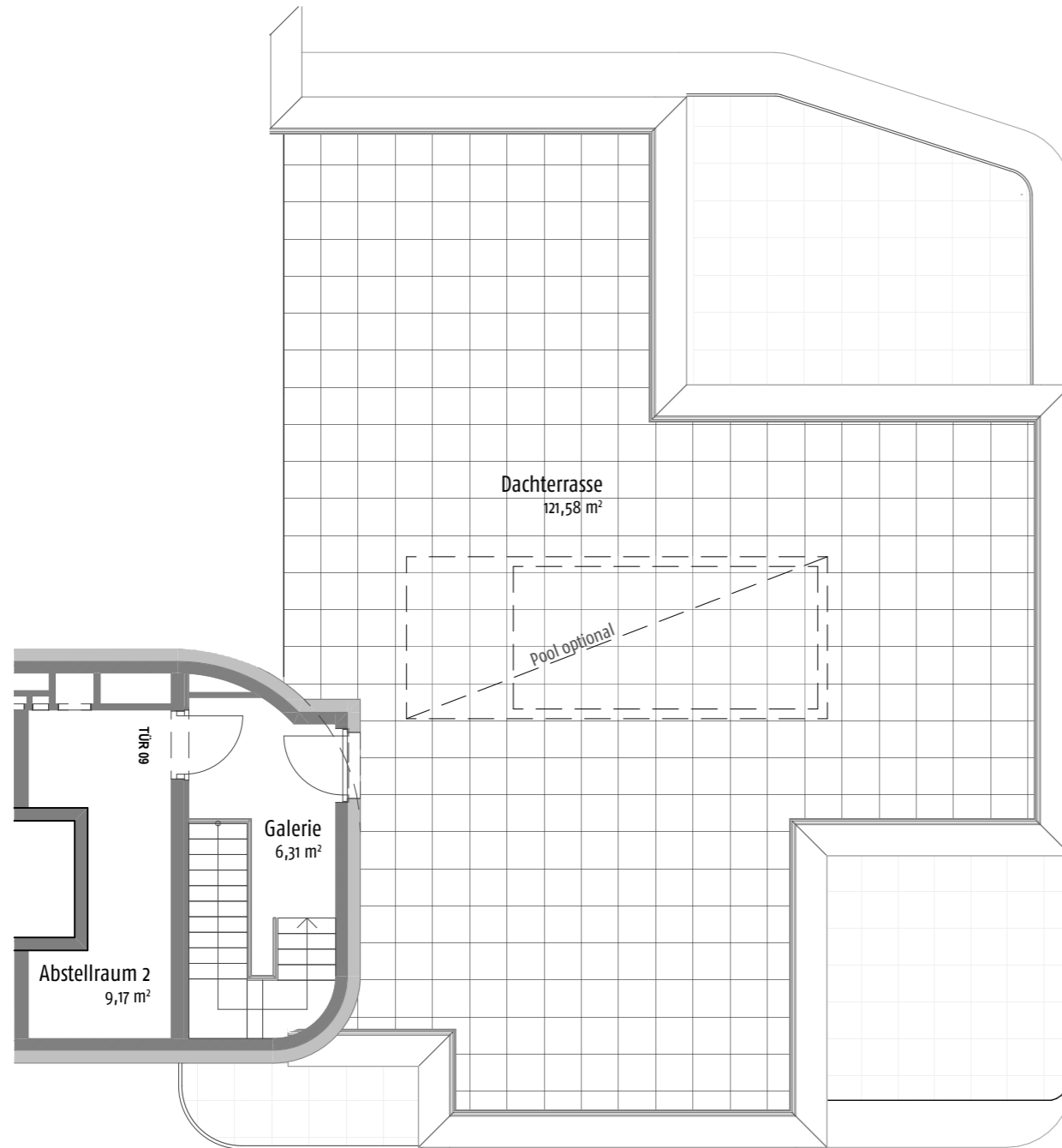


Wohnfläche:	149,13 m <sup>2</sup>
NNF:	149,13 m <sup>2</sup>
Terrasse:	32,97 m <sup>2</sup>
Keller:	15,39 m <sup>2</sup>
Balkon	4,15 m <sup>2</sup>

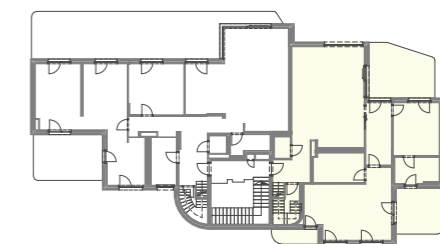
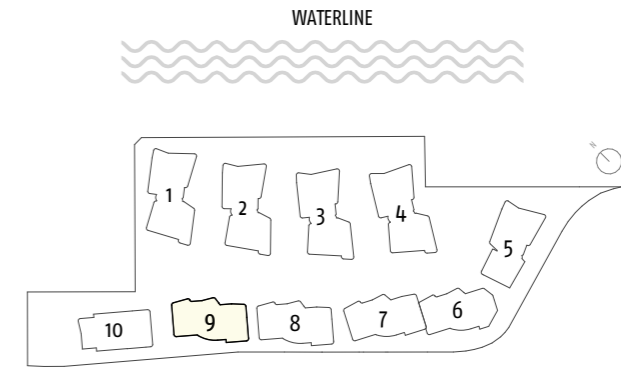


ENTWICKLUNG DURCH





## KUCHELAUER HAFENSTRASSE 98 STIEGE 09 | TÜR 09 | DACHTERRASSE



ÜBERSICHT



FASSADENANSICHT

Wohnfläche:	149,13 m <sup>2</sup>
NNF:	149,13 m <sup>2</sup>
Terrasse:	32,97 m <sup>2</sup>
Keller:	15,39 m <sup>2</sup>
Balkon	4,15 m <sup>2</sup>